

# SAFETY NOTICE

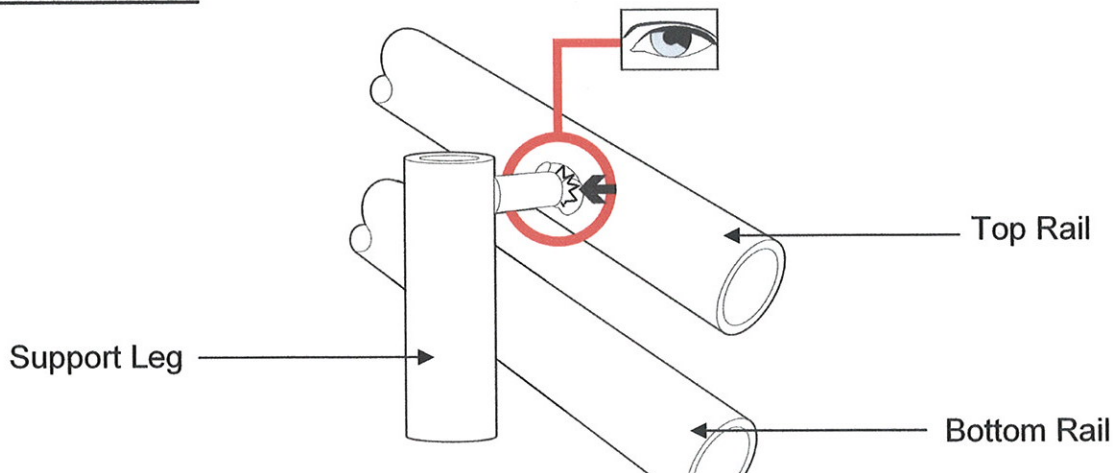
To: All Service Providers engaged in servicing Stannah 250/260 Curved Stairlifts

## Important Safety Upgrade on New Stannah Curved Stairlifts Installed between June 2001 and June 2007

### Background

There have been a very small number of weld failures between the rail and the support leg. Each 250/260 curved stairlift has twin rails and five or more support legs. In most cases a failure of a weld between one of the rails and a leg will have no discernible consequence for a user. However in certain circumstances, if the weld fails between the top rail and either the first and last support leg, the rail can flex and the chair can tip forward.

### Details of Failure Mode



### Corrective Action

Stannah has developed a simple safety upgrade kit to strengthen the first and last support legs. The complete installation can be completed in approximately 30 minutes. All parts and detailed fitting instructions are supplied in the safety upgrade kit.

### Actions Required By Service Providers

1. Determine how many Stannah Model 250/260 stairlifts with curved rails that you have on service that were installed between June 2001 and June 2007.
2. Contact Denise Pidgeon on 01264 386783 or [denise\\_pidgeon@stannah.co.uk](mailto:denise_pidgeon@stannah.co.uk) in Stannah's Customer Services department for free of charge issue of the PL2601261 safety upgrade kit and fitting instructions.
3. The safety upgrade should be done in conjunction with a scheduled service visit within 12 months.