

# SIMS .net Infrastructure Update Utility

## Contents

Introduction.....	2
Preparing to Download .....	2
Downloading the Utility .....	2
Running the Utility on each Workstation .....	4
Documentation .....	6
.NET Framework Information.....	6
.NET Framework 2.0 .....	6
.NET Framework 3.0 .....	7

**Please read this release note carefully before installing or upgrading your software. Do not attempt any installation or upgrade without first making a fully restorable verified backup of your SIMS system.**

## Introduction

The SIMS .net Infrastructure Update Utility is a standalone update utility designed to update and repair SIMS .net workstations. This utility will prepare each workstation for the next generation SIMS System Manager software, deploy a number of third party barcode fonts and upgrade the Microsoft .NET Framework to either .NET 2 or 3, depending on the operating system installed on the workstation.

For more details regarding the Microsoft .NET Framework please refer to *.Net Framework Information* on page 6.

This utility should be run on each workstation on which SIMS .net is installed and requires local administration rights.

## Preparing to Download

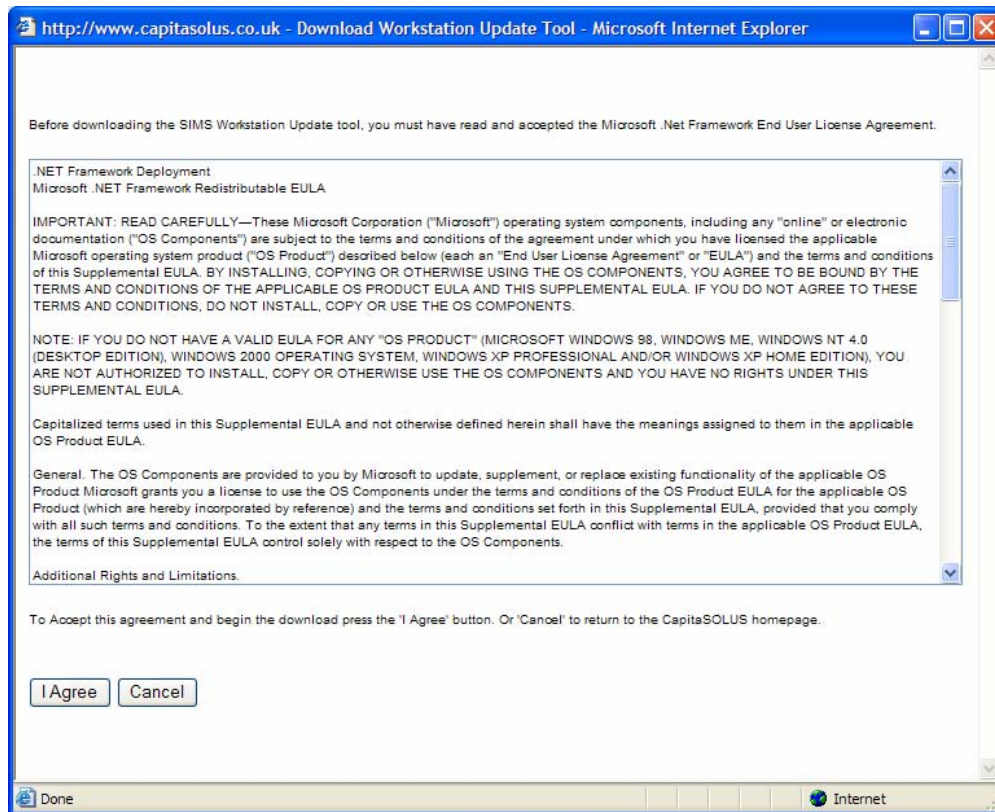
This SIMS .net Infrastructure Update Utility must be run on every workstation on which SIMS .net is installed. Therefore, the utility must be downloaded to an area that is accessible from every workstation.

In order to run the utility successfully, the user must be given Administrator rights on the workstation.

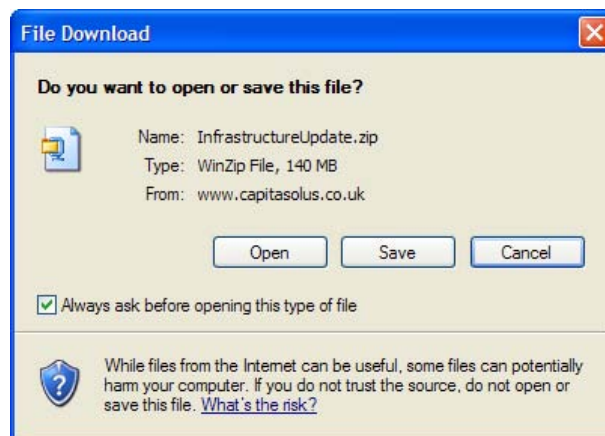
## Downloading the Utility

The SIMS .net Infrastructure Update Utility is obtained by visiting the SOLUS website, <http://www.capitasolus.co.uk/utilities/DownloadInfrastructureUpdate.htm>.

A Licence agreement is displayed, please read this agreement carefully prior to agreeing or cancelling.



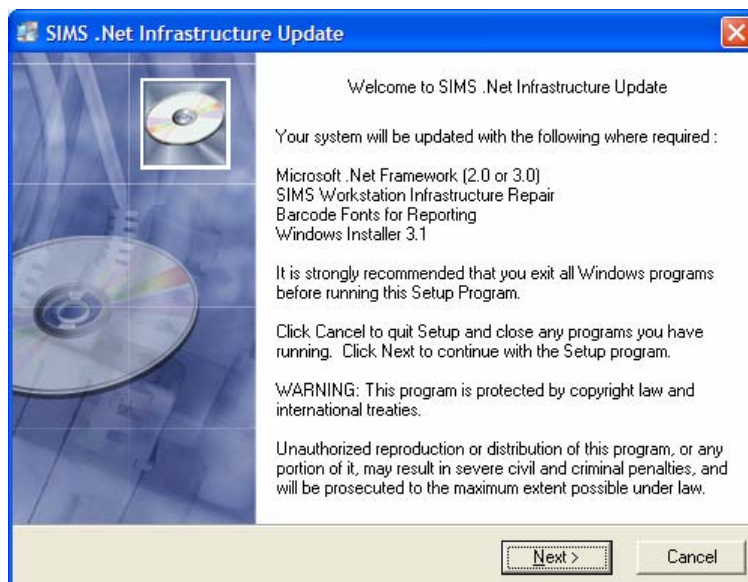
1. Click the **I Agree** button to download a zip file containing the utility.



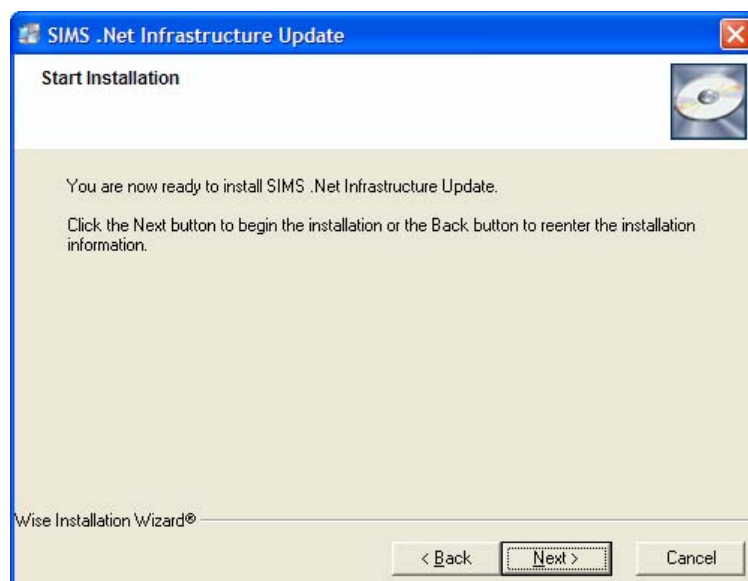
2. Save the zip file to a local area, this may take a few minutes as the download is greater than 140MB in size.
3. Extract the executable file from the downloaded zip file to a location that can be accessed by all the workstations on which SIMS .net is installed.

## Running the Utility on each Workstation

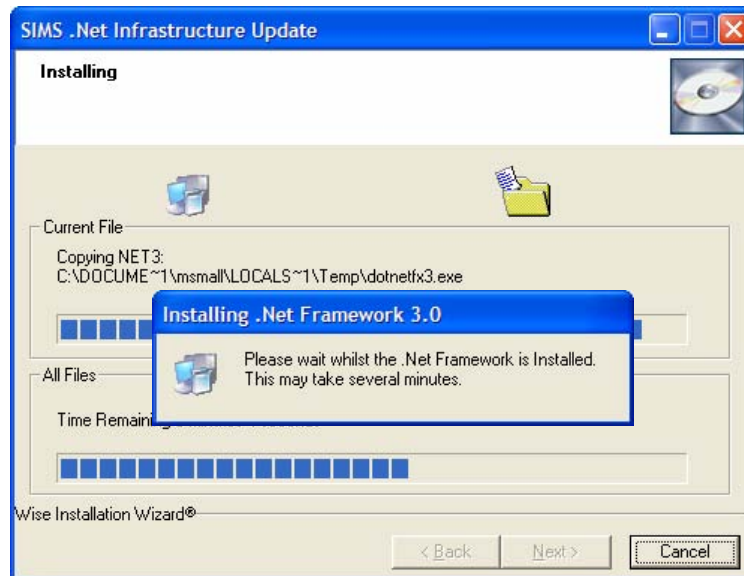
1. Log on to the workstation and ensure that you have Administrator rights. If you are not sure whether you have the required access rights, please consult your System Administrator.
2. Open **Windows File Explorer** and navigate to the **SIMS .net Infrastructure Update Utility** executable. This executable can be found in the location defined when it was extracted from the zip file download. Your System Administrator/Manager should provide you with the location details.
3. Double-click the executable (SIMS .Net Infrastructure Update.exe). The install shield for the utility opens and the following dialog detailing the processes that the utility will perform, will be displayed.



4. Click the **Next** button to display the following dialog.



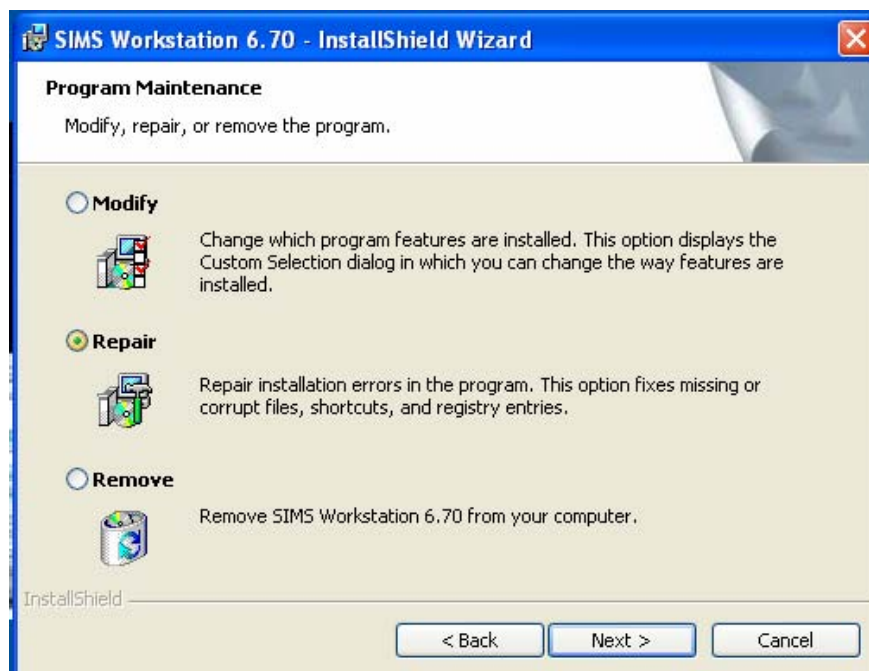
- Click the **Next** button.



The barcode fonts and the .NET Framework are installed.

*NOTE: The Time Remaining shown in the All Files area of the Installation Wizard is not accurate. The installation can take 15 minutes or more depending on the network configuration and memory available.*

The Utility also checks the workstation for any legacy file structures and if any are found the following dialog will be displayed.



- Ensure the **Repair** radio button is selected.

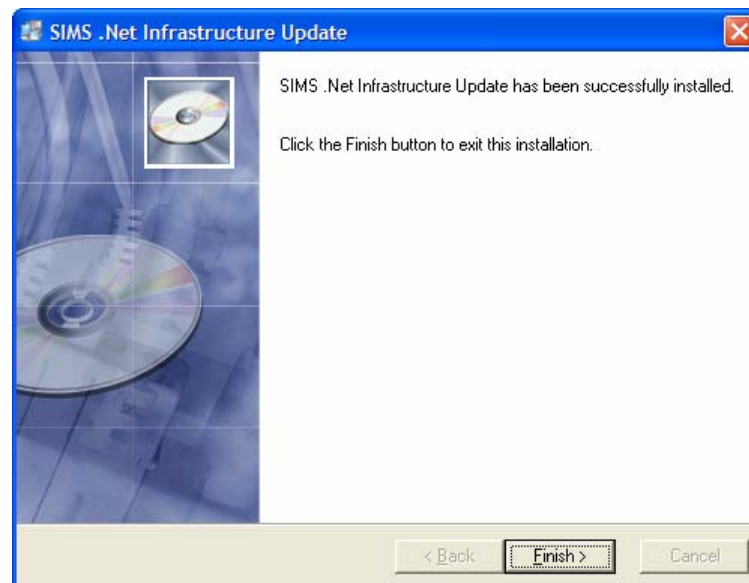
---

**WARNING:** Some legacy structures may contain files that are still in use and it is therefore important that these files are moved rather than deleted. If the **Remove** radio button is selected all the files will be deleted which may result in data corruption.

---

7. Click the **Next** button.

Once the fonts, framework and legacy processes have been completed the following dialog will be displayed.



8. Click the **Finish** button.

---

*NOTE: The Utility can be run more than once on the same workstation.*

---

9. Click the **Finish** button to exit the wizard.

## Documentation

This documentation (.PDF file) can be obtained:

- by downloading from the SupportNet website <http://support.capitaes.co.uk>.
- by emailing [publications@capita.co.uk](mailto:publications@capita.co.uk) and requesting it.

## .NET Framework Information

### .NET Framework 2.0

Version 2.0 of the .NET Framework is installed on workstations using the Windows 2000 operating system.

<http://msdn2.microsoft.com/en-us/library/aa480242.aspx>

## Redistributing the .NET Framework 2.0

### Summary

Applications and controls written for the .NET Framework version 2.0 require the .NET Framework Redistributable Package version 2.0 to be installed on the computer where the application or control runs. The .NET Framework redistributable package is available as a stand-alone executable file, `Dotnetfx.exe`. This article describes where to obtain `Dotnetfx.exe`, and how to use it to deploy .NET Framework applications.

---

*NOTE: If you choose to use the `Dotnetfx.exe` or redistribute it with an application created by you, you must have a valid licensed copy of the Microsoft .NET Framework SDK, or Visual Studio, and any use or distribution of `Dotnetfx.exe` is subject to the terms of the end user license agreement you received with the Microsoft .NET Framework SDK, or Visual Studio. If you do not have a valid licensed copy of the Microsoft .NET Framework SDK, or Visual Studio, you are not authorized to use or distribute `Dotnetfx.exe`.*

---

### Introduction

The version 2.0 release of the Microsoft .NET Framework provides one redistributable installer that contains the common language runtime and .NET Framework components that are necessary to run .NET Framework applications. The .NET Framework redistributable is available as a stand-alone executable file, `Dotnetfx.exe`. The .NET Framework requires a license agreement that gives you specific rights to redistribute `Dotnetfx.exe`. If you have previously installed the .NET Framework SDK version 2.0, Microsoft Visual Studio 2005, or downloaded `Dotnetfx.exe` from the Web, you have accepted the license agreement for `Dotnetfx.exe`. For the terms of the license agreement, see the .NET Framework Redistributable License Terms (EULA).

You can manually launch and install `Dotnetfx.exe` on a computer or it can be launched and installed as part of the setup program for a .NET Framework application.

---

*NOTE: Administrator privileges are required to install `Dotnetfx.exe`. If you have previously installed Microsoft Visual Studio 2005, you do not need to install `Dotnetfx.exe`.*

---

There are minimum configuration requirements that must be met in order to install `Dotnetfx.exe`. For more information about software and hardware requirements and recommendations, please refer to [Minimum Configuration Requirements](#).

## .NET Framework 3.0

Version 3.0 of the .NET Framework is installed on workstations using the Windows 2003 or XP operating systems.

### Introduction

The Microsoft .NET Framework 3.0 provides a redistributable installer that contains .NET Framework 2.0 bindings to the required Windows Vista APIs to run .NET Framework 3.0 applications.

---

The .NET Framework 3.0 redistributable package is available as a stand-alone executable file. The name of the file depends on the type of the targeted platform. For 32-bit platforms, the file is named `Dotnetfx3.exe`. For 64-bit platforms, the file is named `Dotnetfx3_x64.exe`. You can also deploy a small redistributable package named `Dotnet3setup.exe` that downloads the required components during setup.

IA64 support in .NET Framework 3.0 is limited to Microsoft Windows Server code-named "Longhorn." Longhorn already includes .NET Framework 3.0, so no redistributable package is necessary.

To install Microsoft .NET Framework 3.0, one of the following operating systems must be installed on the target computer:

- Microsoft Windows XP Home or Microsoft Windows XP Professional, both with Service Pack 2 or later.
- Microsoft Windows Server 2003 family with Service Pack 1 or later.

The following table lists the hardware requirements for running .NET Framework 3.0.

	<b>CPU required</b>	<b>RAM required</b>
<b>Minimum</b>	Pentium 400 MHz	96 MB
<b>Recommended</b>	Pentium 1 GHz or higher	256 MB or more.